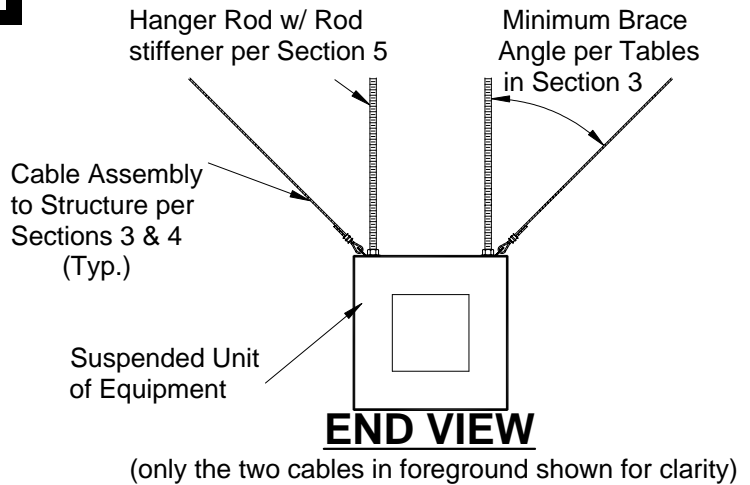
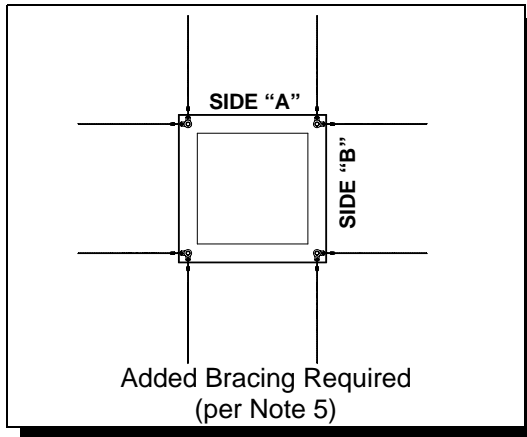
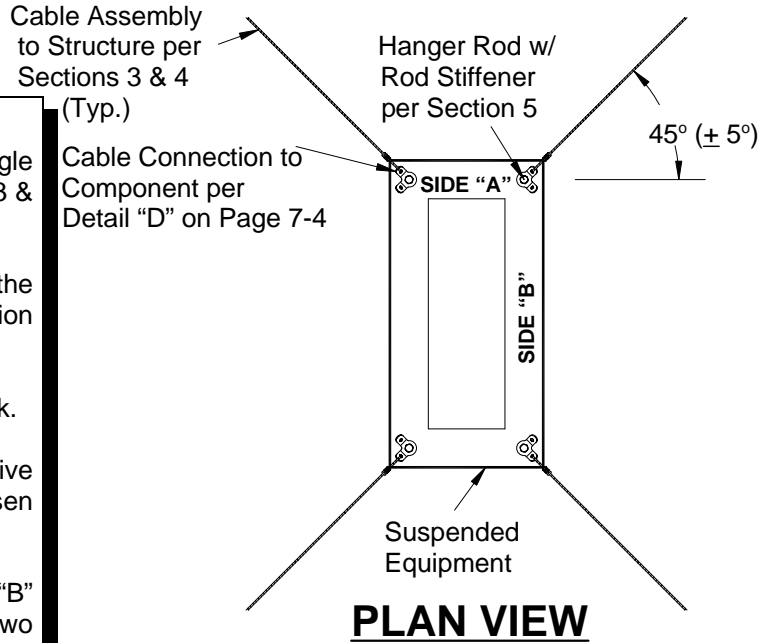


SECTION 7 DETAILS OF BRACED COMPONENTS

SEISMIC WIRE ROPE/CABLE™ ASSEMBLIES FOR BRACES

NOTES:

1. Install cable assemblies with a minimum angle of the cable from the vertical plane per Section 3 & 4 Selection Tables.
2. Anchorage of the cable assemblies to the structure to be per Section 3 & 4 Selection Tables.
3. Tighten cables only to remove excessive slack.
4. After tightening cables to remove excessive slack on vibration isolated components, loosen each cable 1/4" at oval sleeves before crimping.
5. Where the ratio of the length of Sides "A" to "B" of the equipment is less than 1 to 2, use two braces at each corner as shown below.



4-WAY SWAY BRACE DETAIL FOR RECTANGULAR UNITS OF EQUIPMENT (Braced at Top of Unit) (AHU, VAV Box, Transformer, etc.)

APPROVED
Fixed Equipment Anchorage
Office of Statewide Health Planning and Development

OPA-0619 05/01/04

**** Valid for 3 Years Maximum ****



Anthony Pili
Anthony Pili 916-324-9078



CABLEWARE® DIVISION
Seismic Wire Rope/Cable™ Bracing
www.earthquakebrace.com

901 INDUSTRIAL BLVD.
NAPLES, FL 34104
PHONE : 1-800-321-5667
FAX : 1-239-643-4558



© Loos & Co., Inc. 2004

Anwar Yusuf
Anwar Yusuf
Structural Engineer
California SE No. S-3625

Page
7-22
5/1/04